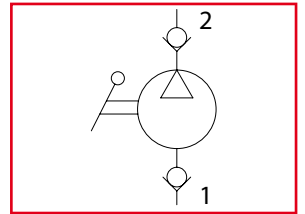




# PME

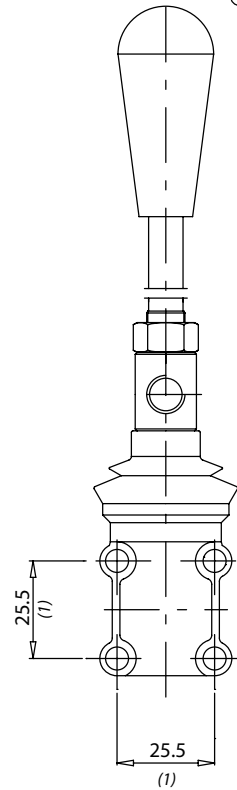
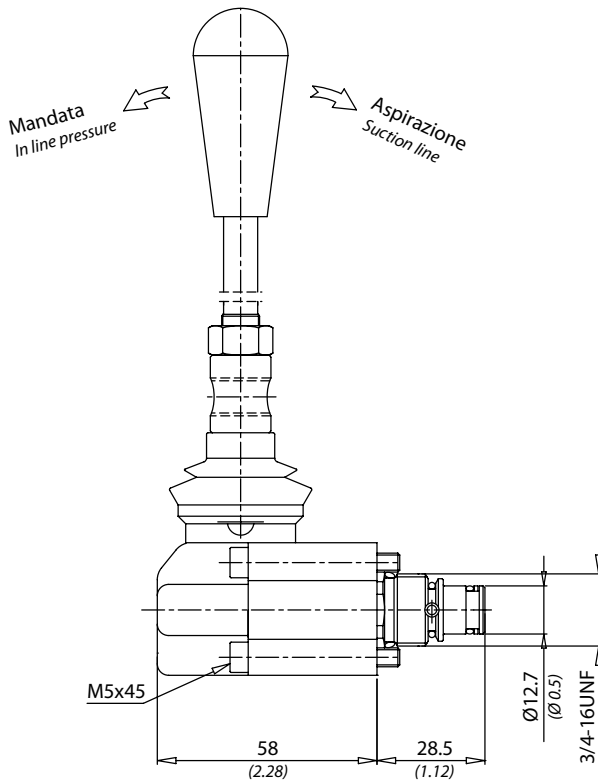
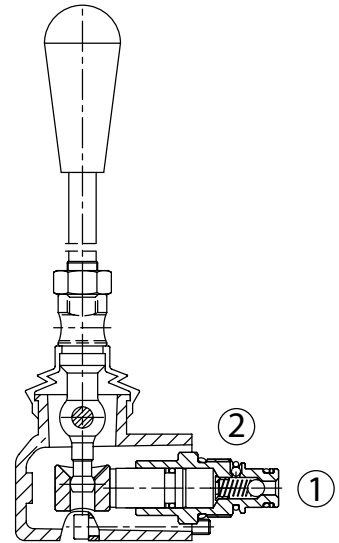
Pompe a mano  
Cartridge hand pumps



**LEHENGOK, S. P.A.**



Dati tecnici Technical data	
Viscosità fluido Fluid viscosity	10-500 mm <sup>2</sup> /s 45 to 2000 ssu (6 to 420 cSt)
Classe di contaminazione Filtration	ISO code 16/13 SAE class 4 or better
Temperatura fluido Fluid temperature	-20°C +80°C -4°F +176°F
Temperatura ambiente Ambient temperature	-20°C +50°C -4°F +122°F



mm  
(Inches)

Caratteristiche tecniche Technical performances					
Codice Code	Cilindrata Displacement cm <sup>3</sup> - in <sup>3</sup>	Pressione Max Max pressure bar/PSI	Peso approssimativo Approx weight Kg / lb	Coppia di serraggio Tightening torque Nm / lbfft	Cavità Cavity
<b>PM5</b>	<b>1 (0.06)</b>	<b>300 (4000)</b>	<b>0,38 (0.84)</b>	<b>25-30 (19-22)</b>	<b>SAE8/2</b>
<b>PME6</b>	<b>2 (0.12)</b>	<b>200 (3000)</b>			

